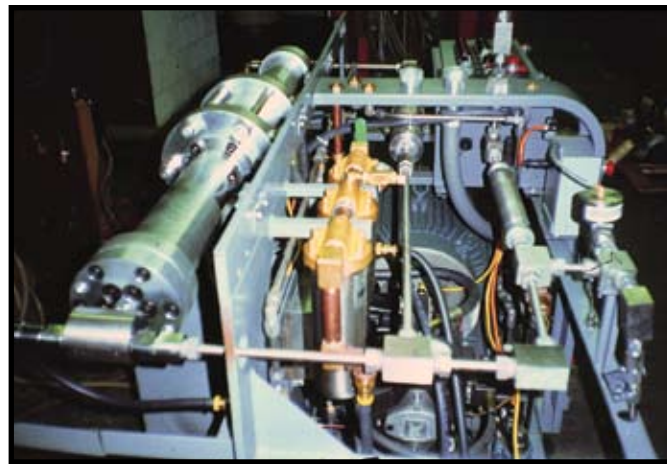


## KIT PART NUMBERS

PUMP		KIT NUMBER		
MODEL	HORSEPOWER SIZES	HP CHECK VALVE (POPPETS)	HP CHECK VALVE (BALL STYLE)	HYDRAULIC PISTON
SLIV, SLIV+, SLV	15-50 HP	05133335	N/A	05115951
SLV 75S & 100S	75 & 100 HP	80084403	N/A	80085079
SLIV & SLIII	15-100 HP		05115944	
SLI & SLII	40 & 50 HP	N/A	05115985	

PUMP		KIT NUMBER	
MODEL	HORSEPOWER SIZES	HYDRAULIC CARTRIDGE	HP PLUNGER SEAL & REBUILD
SLIV, SLIV+, SLV	15-60 HP	05130091	
SLV 75S & 100S	75 & 100 HP	05146584	
SLIV	15-100 HP	05130091	05115977
SLIII	25 HP		05115969
SLI & SLII	40 & 50 HP		05115993



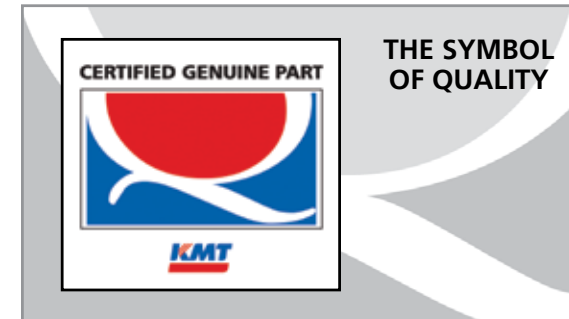
SL-II Topworks - Circa 1980



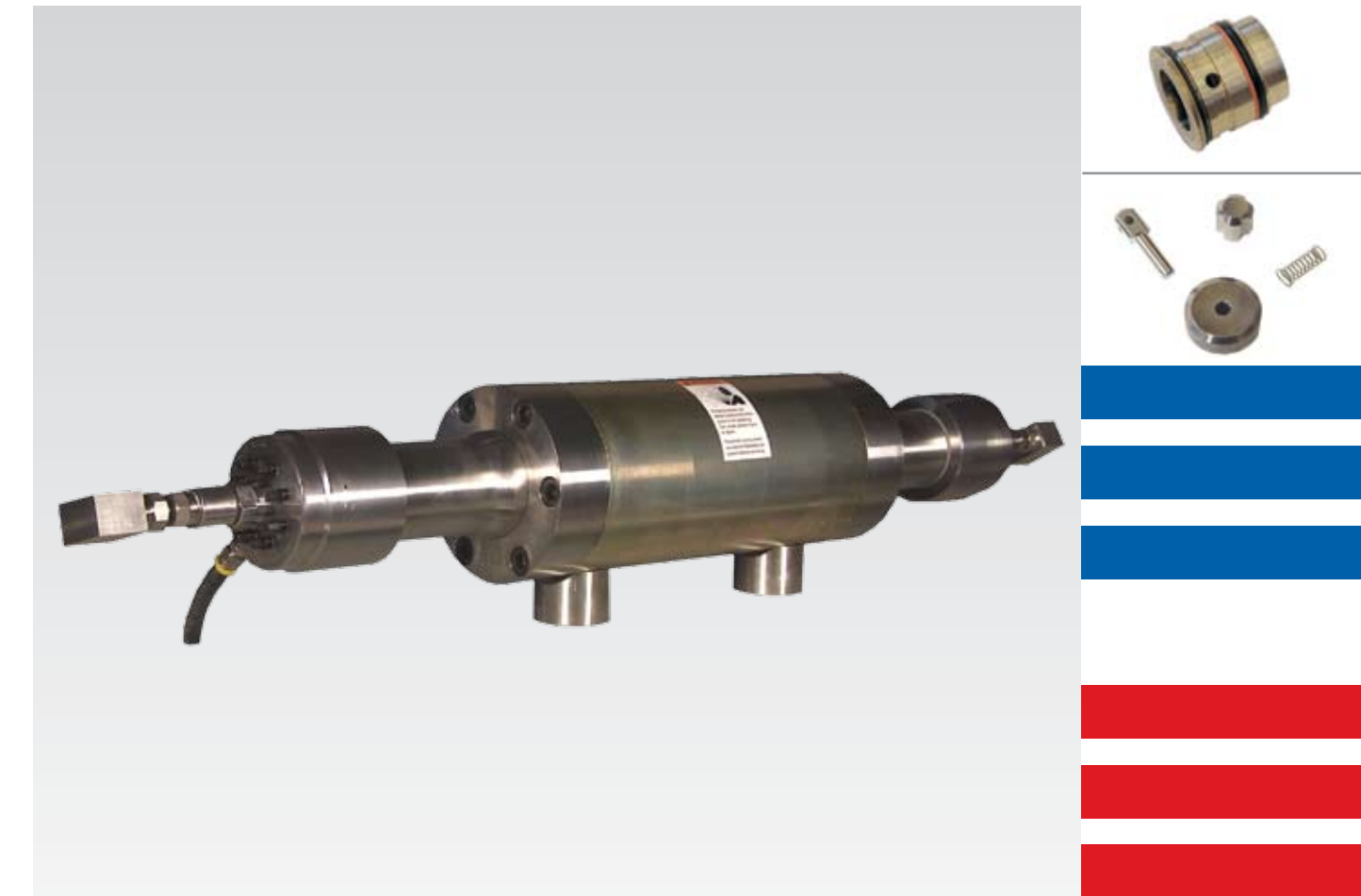
Current SL-V Topworks

## KMT Waterjet Replacement Parts

- Immediate Shipment
- Made by Original Equipment Manufacturer
- Free Phone Technical Support



Advancing Waterjet Technology  
 Worldwide Sales and Support Network  
 Making Waterjet Systems Easier to Use, with Greater Reliability  
 ISO 9001:2000 Certification; CSA and CE Certified  
 Trained, Certified Technicians  
 © 2008



## STREAMLINE™ Intensifier Parts Original Equipment for High Performance



**KMT Waterjet Systems Inc.**

635 W. 12th Street • P.O. Box 231 • Baxter Springs, KS 66713  
 Tel.: 1-620-856-2151 • Fax: 1-620-856-5050  
[www.kmtwaterjet.com](http://www.kmtwaterjet.com) • [sales@kmtgroup.com](mailto:sales@kmtgroup.com)

SIP-08/08



## OVERVIEW

KMT Waterjet is a leading manufacturer of waterjet cutting systems and developer of "Cutting Edge Solutions" for customers in a very wide range of industries. The focus of the company is on intelligently developing systems and parts for ease of use and reliable operation by customers.

The strength of the company is found in the strong waterjet experience (tracing back to 1971) of the employees, the largest network of system integrators in the world, the continual investment in research and development and the ability to use customer feedback.

The world's largest network of system integrators and support people are available to assist with more information at any time.

For the best waterjet system and replacement parts, rely on the "Cutting Edge Solutions" delivered by KMT Waterjet.

## The Value of Genuine KMT Replacement Parts

KMT understands the need to keep your waterjet machine at peak performance. For this reason the company uses the latest technology to make parts for new pumps and to retrofit and upgrade old pumps. By buying parts from KMT, you are assured of buying parts that are made using the newest technology available – even if the parts are for older machines. Working with KMT for Certified Genuine Parts has several additional benefits:

KMT stocks parts for new and old pumps and for *immediate shipment*.

KMT replacement parts are *the same reliable parts* as your high pressure system's original parts.

KMT replacement parts have a *6 month limited warranty*.

KMT waterjet technology is *supported* by trained, qualified and experienced aftermarket representatives.

KMT stocks a *comprehensive inventory* of high quality genuine spare parts.

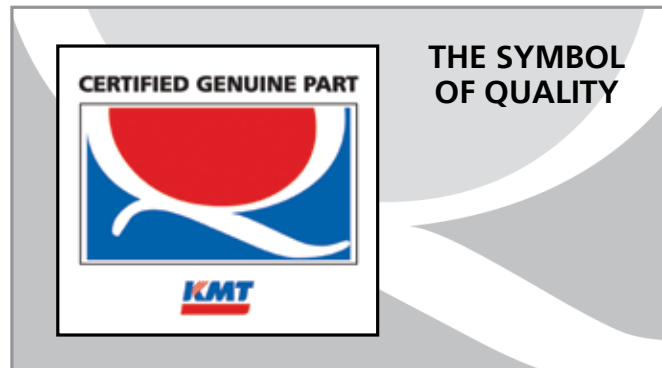
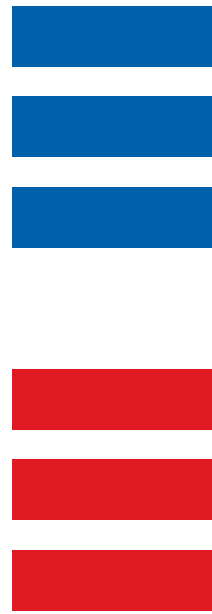
KMT now provides *instructional maintenance videos*.

*Quick shipment* of stock items in one business day or emergency same day delivery.

*KMT representatives are on hand 7 days a week to answer technical questions, ship parts and, if required, dispatch a field service technician for an emergency site visit.*

**Emergency after hours support via a toll-free phone call at 1-800-826-9274.**

**Toll-free number for support or orders: 1-800-826-9274**  
**www.kmtwaterjet.com**



## Hydraulic Piston

### What it does:

The hydraulic piston, utilizing a reciprocating action, provides the power to drive the ceramic plungers pressurizing the water in each high pressure cylinder. The piston has an outer ring and band which enables efficient stroking.

### When to replace:

The hydraulic piston needs maintenance or replacement when hot oil leaks past the piston rings or seals and affects the life of the HP water seal and when the machine can no longer be cooled through normal means.



### Typical Hydraulic Piston Kit:

Snap Ring  
Bearing Ring  
O-Ring  
Back Up Ring  
Seal Assy.  
Check Valve Cartridge

## Hydraulic Cartridge

### What it does:

The hydraulic cartridge provides the barrier between the hydraulic oil chamber and the atmosphere. The ceramic plunger runs through this seal as it is driven by the hydraulic piston into the HP water cylinders.

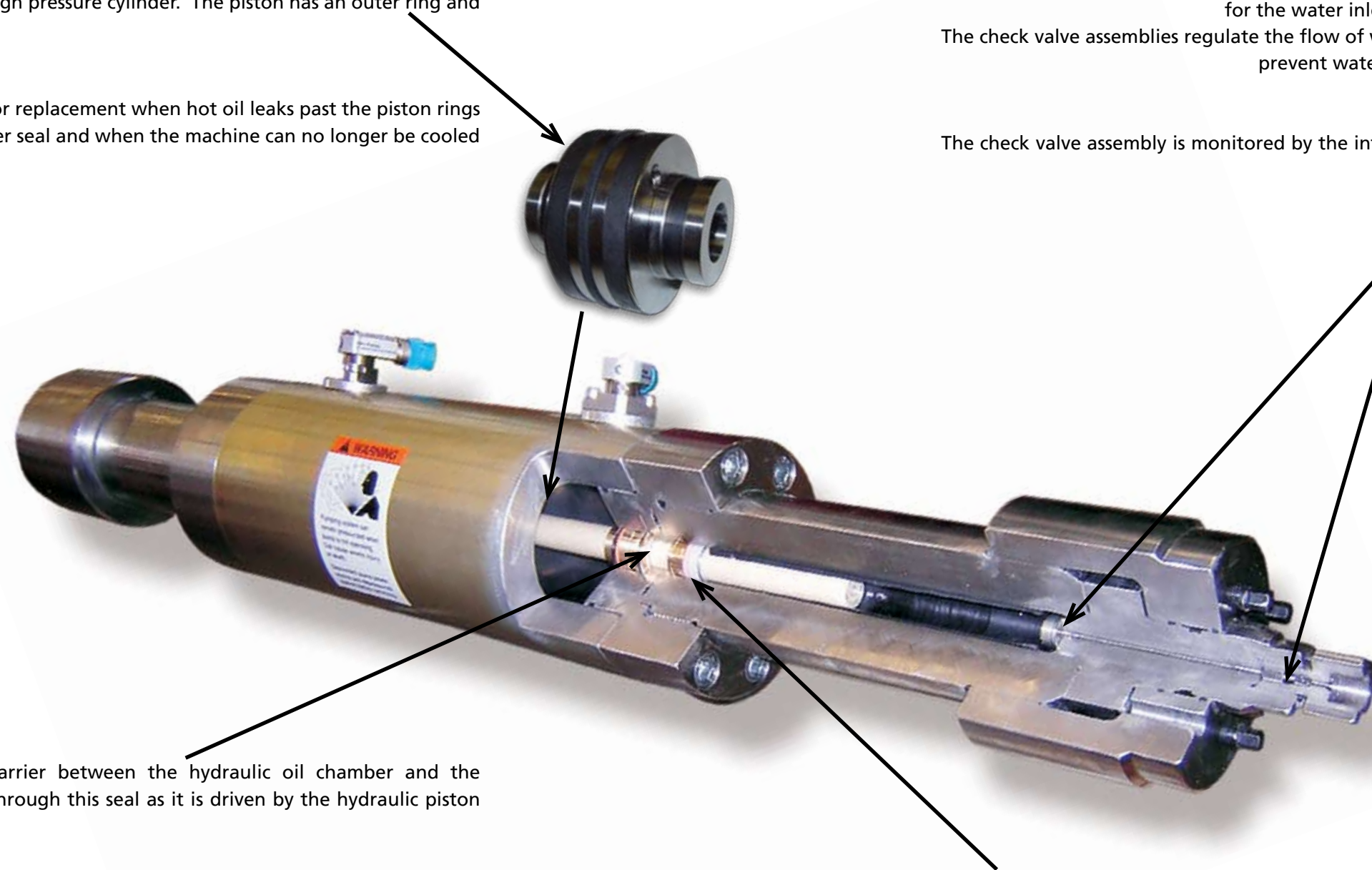
### When to replace:

The hydraulic cartridge requires replacement when oil leakage exceeds recommended levels. A low oil level protection switch will shut the unit down before damage can occur.



### Typical Hydraulic Cartridge (comes pre-assembled):

Packing Rings  
O-Rings  
Back Up Rings  
Packing Seal  
Check Valve Cartridge



## Check Valve

### What it does:

Check valves can be ball or poppet style. There are two (2) on the end of each cylinder. One is for the water inlet, the other is for the high pressure water exit. The check valve assemblies regulate the flow of water to and from the high pressure cylinder to prevent water from escaping back out the inlet water holes.

### When to replace:

The check valve assembly is monitored by the intensifier control system and will notify the user with an alert on the Pump Control Panel.



### Typical Check Valve Kit:

Seat - Seal Head  
Poppet - HP Check Valve  
Pin - Poppet, HP Check Valve  
Spring - Compression Bell End

## High Pressure Plunger Seal Kit

### What it does:

The patented high pressure plunger seals provide the barrier between the pressurized water in the high pressure cylinder and the atmosphere while the plunger rod constantly cycles through it.

### When to replace:

The plunger seals must be replaced when water leakage exceeds recommended levels.



### Typical HP Plunger Seal Kit & Typical HP Plunger Seal Rebuild Kit

Seal Assembly  
Seal Assembly - Seal Head  
O-Rings

